

ICAT

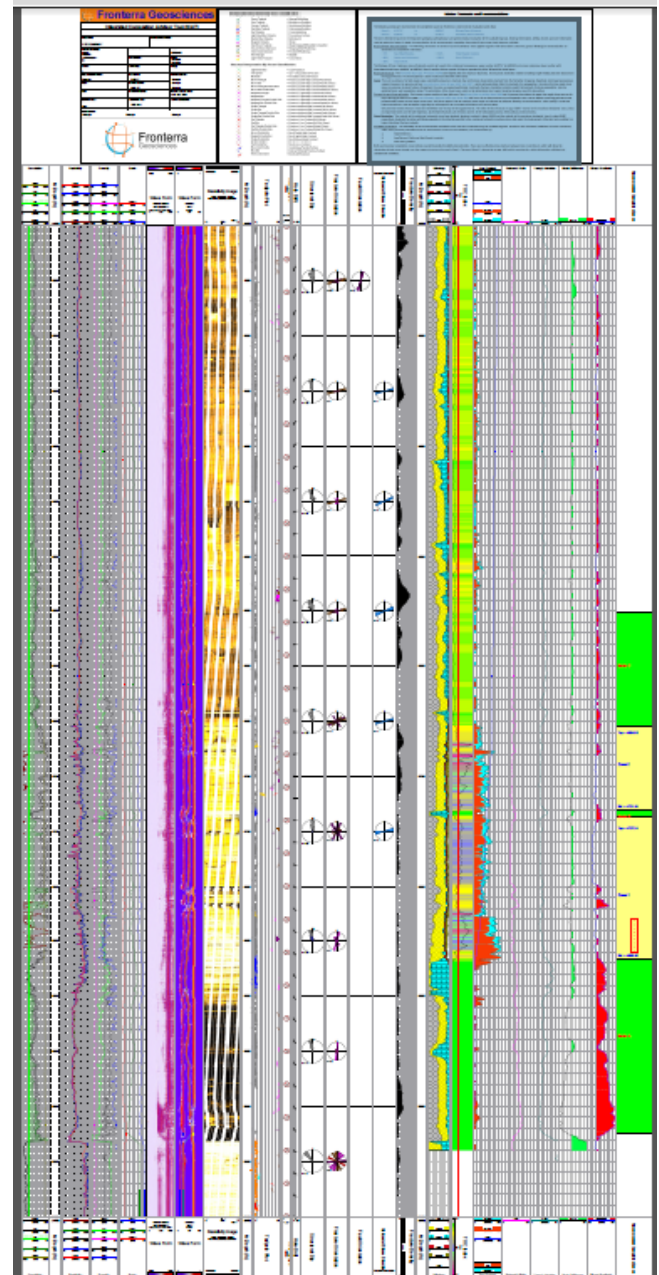
The ***Integrated Completion Advisor Tool*** is designed to integrate the analysis of logging data to provide a recommendation on where to complete a well in a relatively short time frame.

It comprises a composite plot with all the analysis components and a summary of all pertinent information as part of the header. The final track (on the right) provides recommendations on where to complete based on an integrated analysis of all the other data presented.

Though designed through the need for intelligent completions in unconventional reservoirs, it is relevant in all reservoirs where completion decisions are required in a short time frame.

Key Components (dependent on available data):

- Petrophysical evaluation of conventional reservoirs within logged interval
- Detailed borehole image analysis including:
 - Complete structural Interpretation w/ bedding classification and orientation
 - Fracture ID, classification, orientation, fracture density and porosity
 - Fault ID, classification, orientation
- Sedimentological facies classification and interpretation of depositional environments
- Resource estimation including:
 - TOC
 - Adsorbed gas
 - Gas in place
- Complete geomechanical analysis of interval including:
 - Poisson's ratio and Young's modulus
 - Brittleness
 - Estimation of horizontal stress direction and magnitude
- Sonic waveform processing and analysis
 - Perform detailed QC of field sonic
 - Compute shear and Stonely slowness from waveforms
 - Compute shear anisotropy



Task Fronterra Geoscience is a global independent provider of industry leading, integrated geoscience solutions, from single well analysis to complete reservoir studies.